

# Joaquin Miller Park

*Sequoia-Bayview ~ Big Trees ~ Fern Ravine ~ Upper & Lower Palos Colorados*

WELCOME TO JOAQUIN MILLER PARK!  
Whether this is your first visit to the J.M. trails or you're already familiar with the park—one of Oakland's treasures—we would like to share with you a few of our favorite hikes.



PROBABLY THE MOST POPULAR ROUTE in the park, the **Sequoia-Bayview Trail** is mostly flat and wide. It winds in and out of canopied trees in dappled sunlight, making several 180-degree turns around the canyon below before suddenly opening up to two vistas with gorgeous views of downtown Oakland, the Bay and the San Francisco skyline.



*California blackberry*



*California bay laurel*

A LITTLE-USED HIDDEN GEM, the **Fern Ravine Trail** is well named as it carries you among ferns following the ravine bearing Fern Ravine Creek. The steep, narrow trail starts at a parking lot just off Skyline Blvd. and follows Fern Ravine Creek downhill until merging with the Sunset Trail. Don't miss the old wooden bridge just above the junction with the Sequoia Bayview Trail.  
*No bicycles allowed on this trail.*

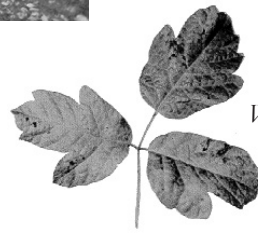


TAKING THE **Big Trees Trail** gives you an opportunity to see a fine strand of huge Pacific Coast Redwoods, planted during the early 1900s after much older redwoods were felled as ship masts in the 1800's. Those who walk the winding, narrow, up and down loop that connects to the Sequoia Bayview Trail at two spots will be well rewarded. Be cautious of bicycle traffic, although it's prohibited in the winter.

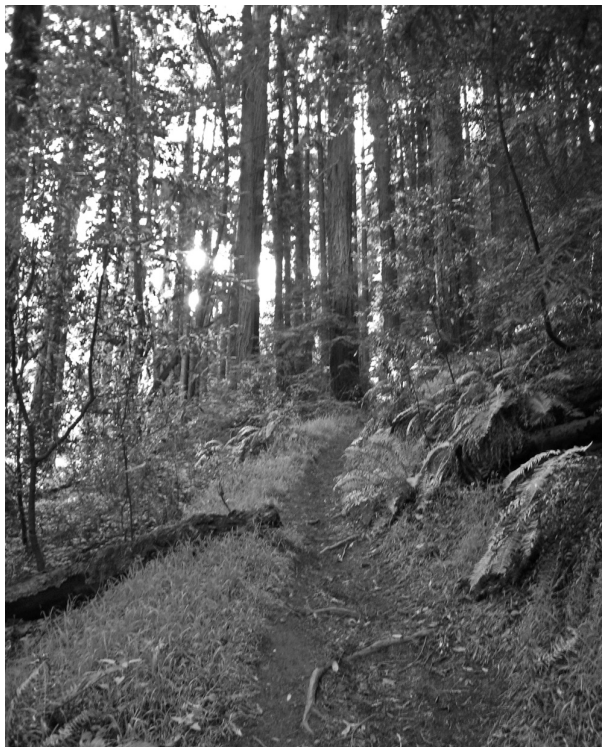




ADVENTUROUS? Then don't miss the **Lower Palos Colorados Trail**. You'll be rewarded with lovely views of the gurgling Palo Seco Creek as well as occasional small waterfalls in season. But it's not for the casual hiker, as this scenic route follows a steep, narrow trail with some sharp drop offs as it climbs from the bottom of a canyon to join the Sunset Trail. *No bicycles allowed here.*



*Western poison oak*



LIKE ITS SISTER TRAIL, **The Upper Palos Colorados Trail** meanders in a steep, narrow climb along the Palo Seco Creek. Suprisingly, the Lower and Upper Palos Colorados Trails never meet!

---

Photos and text by Art Levit and John Eckhouse, hiker representatives of the Friends of Joaquin Miller Park. Design by Rachel Blau.

For more information, please contact Friends of Joaquin Miller Park: [www.fojmp.org](http://www.fojmp.org)

# Joaquin Miller Park



**5 fun hikes!**